

# Apotheose (symphonie Funebre et Triomphale)

Cor fa 2

Berlioz

Musical score for Cor fa 2, measures 1-63. The score is written in treble clef with a key signature of one flat (B-flat) and a common time signature (C). The tempo is marked with a common time signature (C). The score consists of ten staves of music. The first staff (measures 1-9) begins with a rest, followed by a series of notes, and ends with a fermata marked with a '4'. The second staff (measures 10-15) starts with a rest, followed by notes, and ends with a fermata. The third staff (measures 16-21) features a series of notes with a crescendo hairpin and a fermata marked with a 'ff'. The fourth staff (measures 22-27) includes a first ending bracket marked with a '1' and a fermata marked with a 'ff'. The fifth staff (measures 28-33) continues the melodic line. The sixth staff (measures 34-39) features a series of notes with a decrescendo hairpin. The seventh staff (measures 40-45) continues the melodic line. The eighth staff (measures 46-56) includes a fermata marked with a 'ff' and a measure rest marked with an '8', followed by a measure rest marked with a '12' and a fermata marked with a 'f'. The ninth staff (measures 57-59) continues the melodic line. The tenth staff (measures 60-62) continues the melodic line. The eleventh staff (measures 63) ends with a common time signature (C).

Apotheose (symphonie Funebre et Triomphale)

2  
67



73



80



*ff*

86



92



98



104



*cresc.*

110



*ff*

116



*cresc.*

*fff*

122



129



*cresc.*

# pomp and circumstance

Cor fa 2

Elgar

ff sf sf sf sf sf

8 2 mf sf

17 sf

25 mf sf ff

34 f

43 sf f

51

59 2 ff sf sf sf

68 sf sf Cresc sf ff

76 sim.

86

2  
97

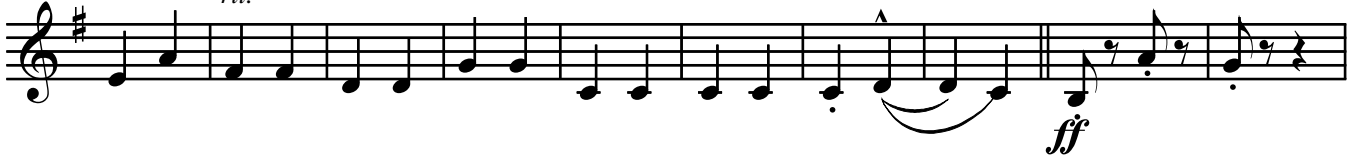
pomp and circumstance Allarg.



107

*rit.*

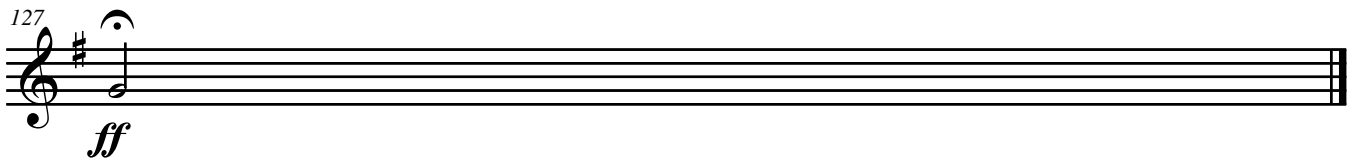
Tempo 1



117



127



# Rigoletto

Cor fa 3-4

Verdi

*pp*

10

21

32

41

51

22