

Apotheose (symphonie Funebre et Triomphale)

Saxophone ténor

Berlioz

16 *ff*

21 *ff*

27

33

39 *ff*

45

51 *cresc.*

56 *f*

59

62

66

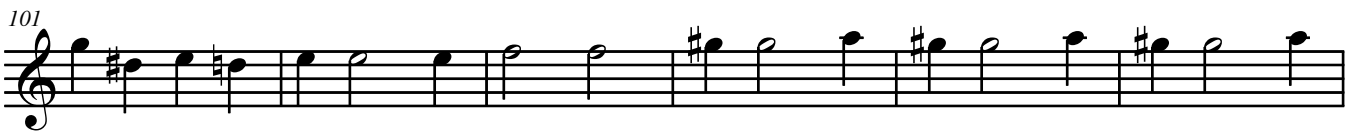
Detailed description: This is a page of a musical score for the Saxophone Tenor part of Hector Berlioz's 'Apotheose' from the 'Symphonie Funebre et Triomphale'. The score is written in treble clef with a common time signature (C). It consists of ten staves of music, numbered 16 through 66. The first staff (measures 16-20) begins with a double bar line and a repeat sign, followed by a fortissimo (*ff*) dynamic marking. The second staff (measures 21-26) includes a first ending bracket over measures 24-26 and a fortissimo (*ff*) dynamic marking. The third staff (measures 27-32) continues the melodic line. The fourth staff (measures 33-38) features a series of notes with sharp accidentals. The fifth staff (measures 39-44) includes a fortissimo (*ff*) dynamic marking with a hairpin crescendo symbol. The sixth staff (measures 45-50) continues the melodic development. The seventh staff (measures 51-55) is marked with a crescendo (*cresc.*) and ends with a 12/8 time signature change. The eighth staff (measures 56-58) begins with a forte (*f*) dynamic marking and a 12/8 time signature. The ninth staff (measures 59-61) continues the rhythmic pattern. The tenth staff (measures 62-66) concludes the page with various note values and rests.

2
71

Apotheose (symphonie Funebre et Triomphale)



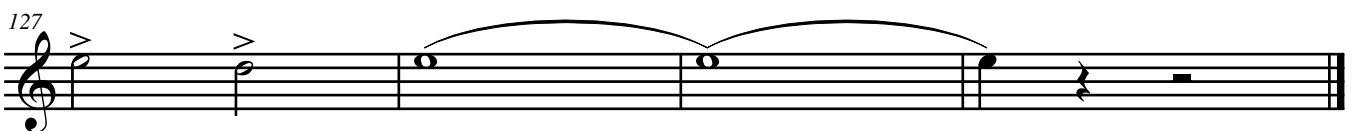
ff



cresc. *ff*



cresc. *fff*



pomp and circumstance

Saxophone ténor

Elgar

8 *ff sf sf sf sf sf*

16 *sf*

24 *sf mf sf ff sf*

33 *f*

42 *sf sf f*

51 *sf sf sf*

61 *ff sf sf sf*

69 *sf Cresc sf ff*

78

89

pomp and circumstance

2
100

Allarg. *ff* rit.

111

Tempo 1 *ff* Piu mosso

120

2 *sf* *sf*

Rigoletto

Saxophone ténor

Verdi

