

# Apotheose (symphonie Funebre et Triomphale)

Clarinete basse

Berlioz

16

*ff*

21

1

*ff*

27

33

39

*ff*

45

*p*

51

cresc.

57

63

67

73

Detailed description: This is a page of a musical score for Bass Clarinet, measures 16 to 73. The music is written on a single staff in treble clef with a common time signature (C). The score consists of ten staves of music. Measure 16 starts with a double bar line and a repeat sign, followed by a series of eighth notes. A dynamic marking of *ff* is placed below the staff. Measure 21 has a first ending bracket above it. Measure 27 features a key signature change to one sharp (F#). Measure 39 has a dynamic marking of *ff* with a hairpin crescendo leading to it. Measure 45 has a dynamic marking of *p*. Measure 51 has a dynamic marking of *cresc.*. Measure 63 contains several triplet markings above the notes. Measure 73 has three accents (^) above the final notes.



85



91



97



103



109



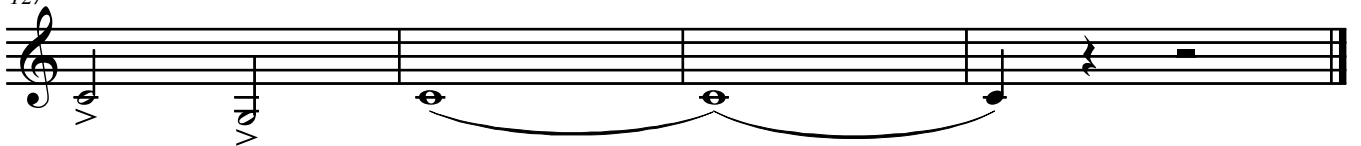
115



121



127



# pomp and circumstance

Clarinete basse

Elgar

8 *ff sf sf sf sf sf*

16 *sf*

24 *mf sf ff*

33 *f sf ff*

42 *sf sf f*

50 *sf sf sf sf sf sf sf*

59 *ff sf sf*

67 *sf sf sf Cresc sf*

75 *ff sim.*

86 *ff*

Detailed description: This is a page of a musical score for Bass Clarinet, titled 'pomp and circumstance' by Elgar. The score is written in treble clef with a key signature of two sharps (F# and C#) and a 2/4 time signature. It consists of ten staves of music. The first staff begins with a dynamic marking of *ff* (fortissimo) and is followed by six measures with *sf* (sforzando) markings. The second staff starts at measure 8 and continues with *sf* markings. The third staff starts at measure 16 and features a *sf* marking. The fourth staff starts at measure 24 and includes *mf* (mezzo-forte), *sf*, and *ff* markings. The fifth staff starts at measure 33 and has *f* (forte), *sf*, and *ff* markings. The sixth staff starts at measure 42 and contains *sf*, *sf*, and *f* markings. The seventh staff starts at measure 50 and is marked with *sf* throughout. The eighth staff starts at measure 59 and includes *ff*, *sf*, and *sf* markings. The ninth staff starts at measure 67 and features *sf*, *sf*, *sf*, a *Cresc* (crescendo) marking, and *sf* markings. The tenth staff starts at measure 75 and is marked *ff* with a *sim.* (sostenuto) marking. The eleventh staff starts at measure 86 and is marked *ff*. The score concludes with a double bar line and a fermata.

2  
96

pomp and circumstance

Allarg.



106

*rit.*

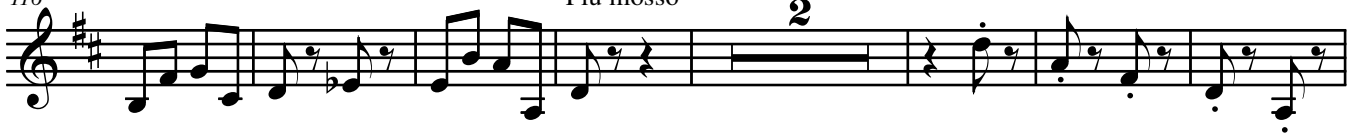
Tempo 1



116

Piu mosso

**2**



125

